

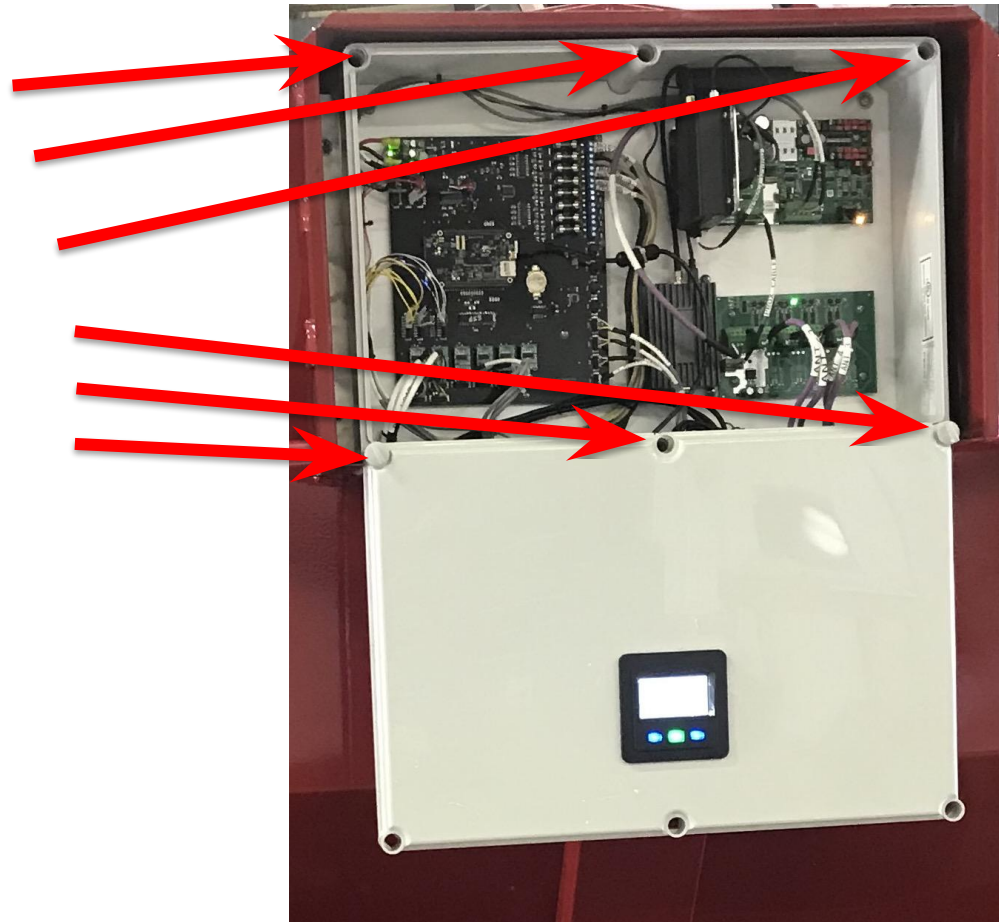
# Installing A USB Jump Drive Into Super SmartFeed For Configuring Wi-Fi

You will need:

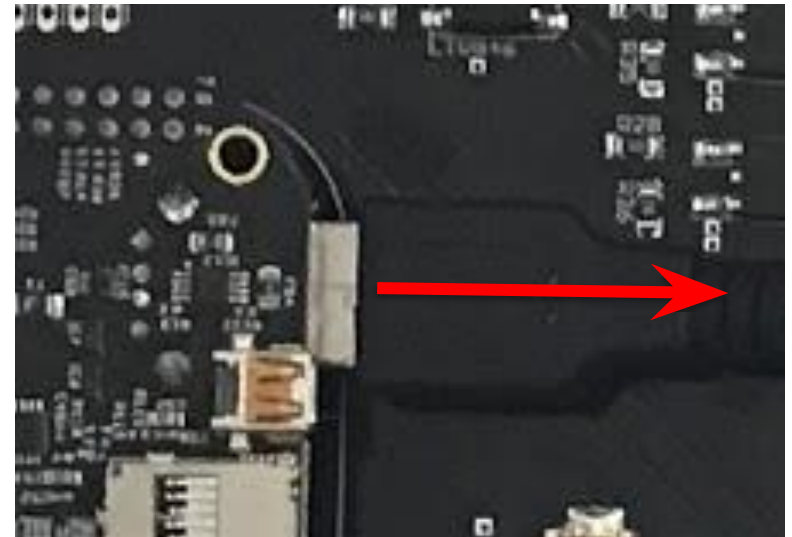
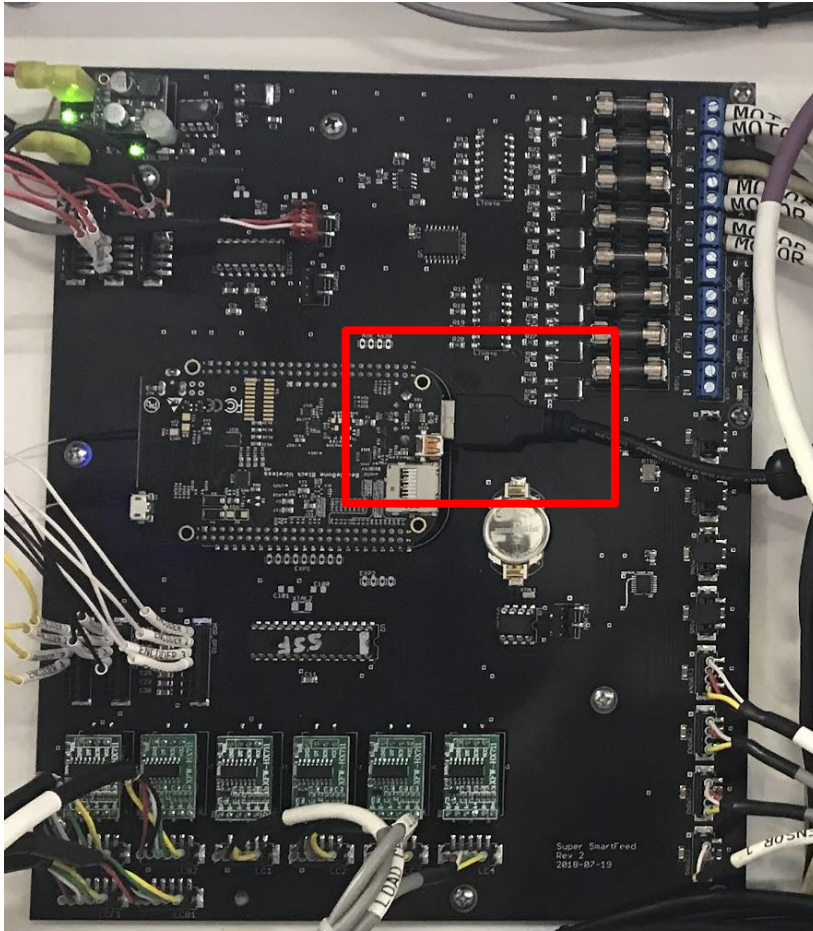
- 1) A USB Jump Drive that has been formatted at FAT 4GB or smaller
- 2) A Phillips Screwdriver

# Loosen the 6 Screws Holding the Electronics Box of Lid

Once the lid is removed, be careful not to drop it, since it is held on by a USB cable.



# Unplug the USB Cable from the Main Circuit Board



# Insert the USB Jump Drive into the USB Port

Insert the USB jump drive into the USB port while the unit is on. The USB jump drive can only be inserted in one orientation. Be sure to note which direction it must be facing.



# Wait 2 Minutes

The jump drive is read once every minute (at the 00 second mark).

So waiting 2 minutes will give it ample time to read the jump drive.

Check if the unit is online. If it is not, try cycling power on the system.

# Remove The Jump Drive

- 1) Remove the USB jump drive
- 2) Reinsert the USB cable that was originally in place
- 3) Close the box lid, making sure not to pinch any cables.
- 4) Tighten the 6 plastic lid screws